

RURAL MUNICIPALITY No. 159
BYLAW NO. 01/20

A BYLAW TO REGULATE VEHICLE WEIGHTS WITHIN
THE RURAL MUNICIPALITY OF SHERWOOD NO.159

Pursuant to Division 2 Vehicle Management 18(1) of *The Municipalities Act*, a Council may, by Bylaw, establish or adopt a system relating to vehicle weights or to route designation in the Municipality; and

Pursuant to Section 36.1 of *The Highways and Transportation Act, 1997*, the R.M. of Sherwood No. 159 has the power to issue a permit regarding overweight and over dimensional vehicles operating within the Municipality. This Bylaw refers to the weight and dimensions restrictions set out in *The Vehicle Weight and Dimension Regulations, 2010*; and

As it is necessary and advisable that every vehicle carrying any such goods in the municipality shall follow the Bylaw with regards to weight restrictions, permits and designated routes for any overweight loads for all classes of vehicles as per *The Highways and Transportation Act, 1997 and The Vehicle Weight and Dimension Regulations 2010*.

NOW THEREFORE the Council of the Rural Municipality of Sherwood No.159, in the Province of Saskatchewan, enacts as follows:

1. **Short Title**

This Bylaw may be referred to as the *Vehicle Permit Bylaw*.

2. **Definitions**

Definitions of words in this bylaw are defined in the Interpretations contained in *The Municipalities Act, The Highways and Transportation Act 1997 and The Vehicle Weight and Dimension Regulations, 2010*.

- a) **“Administrator”** means the administrator or designate of the Municipality.
- b) **“Farm Equipment”** means equipment that is designed and intended for use in farming operations but does not include any of the following:
 - i. A truck
 - ii. A semi-trailer
 - iii. A full trailer
 - iv. A pony trailer
 - v. Farm equipment that is loaded on a truck, trailer or semi-trailer. or
 - vi. Farm equipment that is towing equipment other than farm equipment
- c) **“Municipal Road”** means any public road other than a provincial highway or a provincial road.
- d) **“Municipal Weights”** are the weights defined as Secondary Weight limits in *The Vehicle Weight and Dimension Regulation, 2010*. Weight limits on municipal highways are the same as those for secondary highways, including winter season;

except 8 axle B trains and unless otherwise allowed by the local municipality or regulation.

- e) **“Registered gross vehicle weight”** shall mean the gross weight specified in the certificate of registration of the vehicle issued pursuant to The Traffic Safety Act.
- f) Specific definitions of words not defined within this bylaw shall have the same meaning as assigned to them under *The Vehicle Weight and Dimension Regulations*.

3. **Purpose**

- a) To regulate the weight of vehicles, or vehicles with their loads that are using Municipal roadways.
- b) To limit weights on certain roads and bridges and to limit weights during certain periods of the year, such as spring thaw.
- c) To designate routes for overweight and over dimensional vehicles to follow when operating within the Municipality.

4. **Provisions**

- a) Council may by resolution establish corridors or routes within the municipality which allow vehicle weights above or below Municipal and or Secondary Weights.
- b) For the Administrator to have the option to issue overweight permits for all vehicles wanting to haul goods which are over the Secondary weights (Municipal Weights). The Guide to Saskatchewan Weights and Dimensions Regulations including the Gross Weight Chart is attached in *Appendix A*.
- c) Council may exercise the option by resolution to opt in or out of the Ministry of Highways and Infrastructure Spring Road Restrictions and or by resolution set out its own timeline for Road Restrictions.
- d) The Administrator may refuse to issue a permit to prohibit the operation of certain vehicles on specified roads and/or bridges if the use of a road and/or bridge by a specific vehicle and/or vehicle plus load may result in damage to the road, adjacent property or personal injury to the public.

5. **Permits**

- a) No person shall operate or move or cause to be operated or moved on or over, a motor vehicle at a registered gross vehicle weight or load greater than secondary weight on a municipal road within the boundaries of the Rural Municipality of Sherwood #159 **except** for those roads and streets designated by by-law as primary weight roads within the RM of Sherwood #159. (*Appendix B and including the Over Dimensional Route within the RM of Sherwood*).
- b) No person, without a permit, shall operate a vehicle that exceeds the prescribed or ordered weight if that person intends to operate a vehicle on a municipal road where the vehicle has a weight or is carrying on any axle or wheel of that vehicle, a gross weight in excess of the maximum gross weight set out in the regulations.
- c) All vehicles operating within the R.M. of Sherwood No. 159 are subject to the provisions of *The Vehicle Weight and Dimension Regulations, 2010* and may require a valid R.M. of Sherwood No. 159 Vehicle Permit.

- d) Notwithstanding section 5 (b) of this bylaw, the Administrator may, if satisfied that the vehicle can be operated or moved upon the municipal road without damage to the road, may issue a Primary Weight Vehicle Permit to allow the owner of the vehicle or combination of vehicles to transport primary weight applicable to the axle group loading for the unit indicated, in accordance with the *Weight and Dimension Regulations of The Highway and Transportation Act, 1997* within the municipality, except any restricted roads or bridges.
- e) Overweight permits are restricted to non-divisible loads and loads considered impractical to divide.
- f) Permitted vehicles shall only be operated on municipal roads as designated by the Administrator.
- g) A copy of the approved permit shall be carried in the vehicle and be available upon request by a Peace Officer, Designated Officer or Bylaw Enforcement Officer appointed by the R.M. of Sherwood No. 159, at any and all times.
- h) Permit stickers will be issued for annual permits and must be visible in the window of the vehicle.
- i) Permits are non-transferrable.
- j) Payment of the permit(s) are required at the time of application. The schedule of permits and fees is attached in *Appendix C*. Permits will not be issued until receipt of full payment.
- k) Annual vehicle permits are only valid for the calendar year (January 01-December 31) they are purchased and will not be pro-rated.

6. **Exemptions**

- a) Farm equipment as per *The Vehicle Weight and Dimension Regulations, 2010*

7. **Enforcement**

- a) In any case, with or without a valid vehicle permit, when there is damage to a RM road or infrastructure due to overweight or over dimension of a vehicle or load, the owner and or operator of the vehicle will be held responsible for the full costs of the repair.
- b) Any person who contravenes any provision of this Bylaw is guilty of an offence.
- c) The penalty for breach of any provisions of this Bylaw shall be those set out in the General Offence and Penalty Bylaw of the Municipality.
- d) The Administrator may also delegate a Designated Officer for the enforcement of this Bylaw.

8. **Coming Into Force**

This Bylaw shall come into force and effect on the day of its final adoption.

Read a first time on the 19 day of FEB - 2020
Read a second time on the 19 day of FEB - 2020
Read a third time on the 19 day of FEB - 2020

[Seal]

Reeve

Administrator

Read a third time and adopted
this 19 day of FEB, 2020

Administrator

N.W.T.

Weight Classification

- Primary Weight
- 9 Month Primary Weight (Secondary Weight in April, May & June)
- Primary Weight by Minister's Order (15 Km mile does not apply)
- 75% of Primary Weight
- Limited G.V.W. 41,500 kg or weight shown in restrictions, whichever is lesser
- Bridge Restriction
- 8000 kg Restriction
- No Allowed "Winter Weights"
- Secondary Weight
- Primary Weight Permit Available of Hwy 102, 905 & 915

Inspection Station
Weight Deck

BRIDGE AND HIGHWAY RESTRICTIONS

Hwy 2 The St. Louis bridge from St. Louis to 1 km N of the South Saskatchewan River - Max GVW 20 000 kg

Hwy 312 The Gabriel Dumont Bridge - Secondary Weights, No Winter Weights

Hwy 905 Max GVW 41 500 kg

Hwy 909 Turner Lake Bridge located south east of Turner Lake - Max GVW 34 500 kg

Hwy 919 From Junction Hwy 21 to North Boundary of Meadow Lake Provincial Park - No Winter Weights

Hwy 919 Bridge over the Cold River approx 20.9 kms NW of Jct Hwy 21 - No Winter Weights

Hwy 955 From South of Douglas River Bridge to North limits of Hwy 955 - Max GVW 41 500 kg

Old Nipawin Bridge
On the Prov Road between the Jct with Hwy 35 in Nipawin and its Jct with Hwy 35/65 NW of Nipawin - Max GVW 6 000 kg; No Winter Weights

Roche Pardee
From Roche Pardee to Jct Hwy 39 - No Winter Weights

ROAD RESTRICTION INFORMATION
Saskatoon Area 306-933-6228
Regina Area 306-787-7623
All Other Saskatchewan Areas 1-888-335-7623

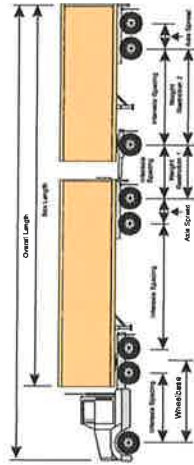
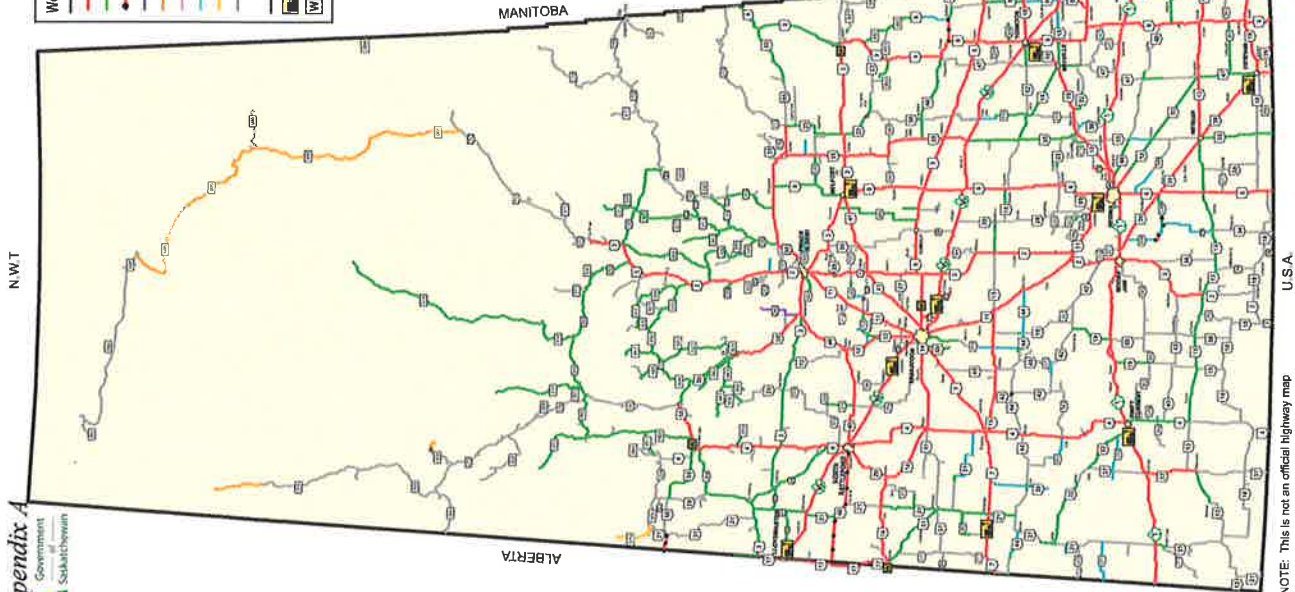
FOR BRIDGE AND STRUCTURAL CLEARANCE TABLE GO TO
www.highways.gov.sk.ca/trucking

WIDE LOAD

LONG LOAD

OVERSIZE LOAD

Consult "The Vehicle Weight and Dimension Regulations, 2010" for all escort and over-dimension "D" - sign requirements



Shear axle weights are subject to the five axle

Configuration

Primary	6 000	17 000	14 500	14 500	48 500
Secondary	6 000	14 500	14 500	14 500	35 000
Winter Primary	6 000	18 000	18 000	18 000	42 000
Winter (S) (M)	6 000	18 000	18 000	18 000	42 000

Maximum GVW Allowed

Tractor & semi-trailer 2 axle

A Train 7 axle

Primary	6 000	17 000	17 000	9 100	59 500
Secondary	6 000	14 500	14 500	8 200	49 000
Winter Primary	6 000	18 000	18 000	10 000	53 500
Winter (S) (M)	6 000	18 000	18 000	10 000	53 500

NOTE: See Table 5 for minimum and maximum in-axle spacing limits. The weight on a full trailer is restricted. The rear trailer cannot exceed the weight of the lead trailer.

B Train 7 axle

Primary	6 000	17 000	17 000	18 000	60 000
Secondary	6 000	14 500	14 500	18 000	49 500
Winter Primary	6 000	18 000	18 000	18 000	60 000
Winter (S) (M)	6 000	18 000	18 000	18 000	60 000

B Train 8 axle

Primary	6 000	17 000	23 000	17 000	67 500
Secondary	6 000	14 500	20 000	14 500	55 000
Winter Primary	6 000	18 000	23 000	18 000	67 500
Winter (S) (M)	6 000	18 000	23 000	18 000	67 500

NOTE: The maximum spread on a train axle group is 3.1 m. When operating on Provincial Highways 1 & 2, the maximum allowed weight on a train axle group on a B train is 24 000 kg.

C Train 8 axle

Primary	6 000	17 000	9 100	17 000	60 500
Secondary	6 000	14 500	8 200	14 500	50 000
Winter Primary	6 000	18 000	10 000	18 000	60 500
Winter (S) (M)	6 000	18 000	10 000	18 000	60 500

NOTE: See Table 5 for minimum and maximum in-axle spacing limits. The weight on a full trailer is restricted. The rear trailer cannot exceed the weight of the lead trailer.

Tridem drive truck tractor semi-trailer combination

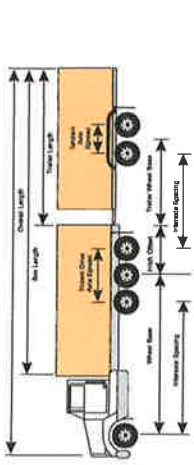
Primary	7 300	22 000	24 000	52 300
Secondary	7 300	20 000	24 000	48 300
Winter Primary	7 300	25 000	24 000	55 300
Winter (S) (M)	7 300	25 000	24 000	55 300

NOTE: Minimum weight on both tridem drive and tridem trailer axle groups depends on axle spread.

B Train combination

Primary	7 300	22 000	23 000	17 000	62 500
Secondary	7 300	20 000	23 000	16 000	52 000
Winter Primary	7 300	25 000	23 000	18 000	67 500
Winter (S) (M)	7 300	25 000	23 000	18 000	67 500

NOTE: See Table 1 & 4 for maximum spread on a train axle group. See maximum weight on a train axle group on a semi-trailer for a B-train in 3.1m. The maximum allowed weight on a tridem axle group on a B-train is 24 000 kg. When operating on Provincial Highways 1 & 2, the maximum allowed weight on a train axle group on a B train is 24 000 kg.



Shear axle weights are subject to the five axle

Configuration

Primary	5 500	14 500	14 500	23 500
Secondary	5 500	14 500	14 500	23 500
Winter Primary	5 500	18 000	18 000	23 500
Winter (S) (M)	5 500	18 000	18 000	23 500

Maximum GVW Allowed

Straight truck 3 axle

Straight truck and pony trailer

Primary	7 300	17 000	17 000	41 300
Secondary	5 500	14 500	14 500	34 500
Winter Primary	7 300	18 000	18 000	43 300
Winter (S) (M)	7 300	18 000	18 000	43 300

Straight truck and full trailer 6 axle

Primary	5 500	9 100	17 000	48 300
Secondary	5 500	8 200	14 500	37 500
Winter Primary	5 500	10 000	18 000	46 300
Winter (S) (M)	5 500	10 000	18 000	46 300

NOTE: Minimum allowed weight on full trailer is 18 000 kg.

Tridem drive straight truck 4 axle

Primary	7 300	22 000	23 000	29 300
Secondary	7 300	20 000	23 000	27 300
Winter Primary	7 300	25 000	23 000	32 300
Winter (S) (M)	7 300	25 000	23 000	32 300

NOTE: See Table 1 for tridem drive axle group spreads (no pusher tag or lift axles allowed). Drive axle locking devices must be unclipped while operating on a public highway.

Twin steer tandem drive straight truck

Primary	11 000	14 500	20 000	45 500
Secondary	11 000	14 500	20 000	45 500
Winter Primary	11 000	18 000	21 000	52 000
Winter (S) (M)	11 000	18 000	21 000	52 000

Twin steer tandem drive straight truck and full trailer

Primary	11 000	17 000	17 000	53 000
Secondary	11 000	14 500	14 500	48 500
Winter Primary	11 000	18 000	18 000	55 000
Winter (S) (M)	11 000	18 000	18 000	55 000

NOTE: Minimum allowed weight on a full trailer is restricted.

Tandem steer tridem drive straight truck

Primary	13 000	23 000	23 000	36 000
Secondary	11 000	20 000	23 000	31 000
Winter Primary	13 000	25 000	23 000	36 000
Winter (S) (M)	13 000	25 000	23 000	36 000

NOTE: See Table 2 tridem drive axle group spread.

Tandem steer tridem drive straight truck and pony trailer

Primary	13 000	23 000	23 000	36 000
Secondary	11 000	20 000	23 000	31 000
Winter Primary	13 000	25 000	23 000	36 000
Winter (S) (M)	13 000	25 000	23 000	36 000

Refer to Table 2 for pony trailer weight

U.S.A.

NOTE: This is not an official highway map

LEGAL DIMENSIONS

Width (Maximum)

- Any vehicle, building, or object, 2.6 m (8'6")
- Mirrors may extend on each side of the vehicle an additional 30 cm (12")

Height (Maximum)

Any vehicle, building, or object, 4.15 m (13'6")

Length (Maximum)

- Truck, pony trailers or single vehicle, 12.5 m (41')
- Tandem steer tridem drive, 14 m (45'9")
- Bus or motorized RV, 14 m (45'9")
- Box length, Semi-trailer or full trailer 16.2 m (53')
- Box length A, B, or C train, 20 m (65'7")
- Box length on a truck and full trailer, 20 m (65'7")
- Tractor and semi-trailer or any other combination of vehicles, 23 m (75'5")
- Tridem Drive truck tractor semi trailer combination 23.5 m (77'1")
- A train, B train or C train, 26 m (85'4")
- Aerodynamic devices are not included in an overall measurement of a vehicle(s) (Maximum 61 cm)
- Front heavy duty bumpers are not included in the overall measurement of a vehicle (Maximum 30 cm)

Internal Dimensions

Maximum

- Wheelbase for a tridem drive truck tractor, 6.8 m
- Wheelbase for a single, tandem truck tractor, 6.2 m (24'4")
- Wheelbase for semi-trailers is 12.5 m
- Wheelbase sum of both B train trailers is 17 m (55'9")
- Tridem axle spread for a B train is 3.1 m (10'2")
- Tridem axle spread for a pony trailer is 2.5 m
- Effective overhang (including the load) for a semi-trailer is limited to 35% of its wheelbase
- Effective overhang (including the load) on any truck or pony trailer is limited to 4.0 m (13'1")
- Kingpin setback (measured anywhere in an arc around the kingpin and includes the load) may not be more than 2.0 m (6'6")
- Hitch offset in an A or C train, truck or trailer towing another trailer is 1.8 m (5'11")
- Hitch offset for a tridem drive truck towing a pony trailer 2.6 m
- Track width on a semi trailer is 2.6 m

Minimum

- Wheelbase of a tridem drive truck or truck tractor 6.6 m
- Wheelbase for a semi-trailer, full trailer or pony trailer is 6.25 m (20'6")
- Track width for a semi-trailer 2.5 m (8'2")
- Tridem axle spread for a pony trailer is 2.4 m
- Wheelbase for a rear trailer of a B train 6.25 m (20'6")

Overdimension & Overweight Permits are available from:

The SGI Permit Office:

Open 6am - 10pm daily except Christmas Day, Boxing Day, and New Year's Day
Toll free in Saskatchewan: 1-800-667-7575
Regina and outside Saskatchewan: 306-775-6969
Fax: 306-775-6909
Email: sgipermitoffice@sgi.sk.ca

For information on the Policies & Regulations:

Saskatchewan Ministry of Highways and Infrastructure
9th Floor, 1855 Victoria Avenue
Regina, Saskatchewan, S4P 3T2
Phone: 306-787-4801
Website: www.highways.gov.sk.ca/trucking

Additional SGI Contact Information:

Saskatchewan Government Insurance
5104 Donnelly Crescent
Regina, Saskatchewan, S4X 4C9
Customer Service Centre (Vehicle Registration)
1-800-667-9868 or 306-775-6900
Vehicle Standard & Inspection 306-775-6188
Transportation Regulations & Policies Branch:
Telephone: 306-787-4801
Fax: 306-798-0172

Commercial Vehicle Enforcement (CVE) Branch:

Toll Free Inquiry line (in Saskatchewan): 1-866-933-5290
Telephone (Outside Saskatchewan): 306-933-5290

Partnership Programs and Services:

Telephone: 306-787-0648

HIGHWAY TRANSPORT PATROL INSPECTION STATION / PATROL OFFICE PHONE LIST

	TEL #	FAX #
Clavet	306-964-1751	306-933-8337
Estevan	306-637-4522	306-637-4523
Hudson Bay Patrol	306-865-4515	306-865-4517
Kindersley	306-463-5455	306-463-5456
Langham	306-933-6777	306-933-8337
Lloydminster	306-387-5670	306-387-5672
Meadow Lake Patrol	306-236-7595	306-236-7660
Melfort	306-752-6275	306-752-6274
Moose Jaw Patrol	306-694-3742	306-694-3780
Moosemin	306-435-4520	306-435-4521
Prince Albert Patrol	306-953-3680	306-953-3531
Regina	306-787-7480	306-798-1100
Swift Current	306-778-8314	306-778-8686
Weyburn Patrol	306-848-2446	306-848-2461
Wynyard Patrol	306-554-5459	306-554-5434
Yorkton	306-786-1366	306-786-1399

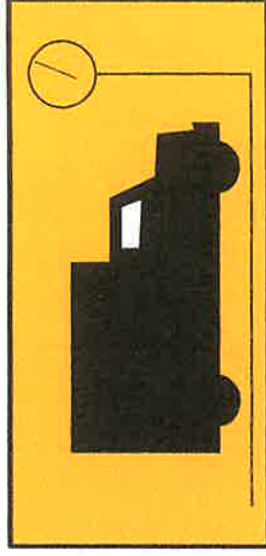
PATROL OFFICES HAVE NO WEIGH SCALES
INSPECTION STATIONS ARE AVAILABLE FOR INDUSTRY TO "SELF WEIGHT" EXCEPT WHEN THE "REPORT LIGHTS" ARE ACTIVATED AND VEHICLES ARE REPORTING.
ENFORCEMENT PERSONNEL ARE AVAILABLE BY APPOINTMENT TO PROVIDE OFFICIAL WEIGH SLIPS. REFER TO MAP FOR THE LOCATION NEAREST YOU.



A Guide to Saskatchewan Weight and Dimension Regulations

2014

First Edition



AXLE GROUP LOADINGS

Tire loading is 10 kg per millimetre (560 lb per inch) width of tire, as stamped by the manufacturer, to a maximum of 3 000 kg (6,600 lbs) per tire and subject to axle regulation weights

Note: Wide base tires (Super Singles) allowed 3 850 kg on Primary Highways (3 000 kg on Secondary)

Table 1: Tridem Drive Axle Group Weights for Truck Tractor and Single Steer Tridem Drive Straight Trucks

Primary Weight	Secondary/Municipal
22 000 kg	20 000 kg
21 000 kg	
20 000 kg	

Table 2: Tridem Drive Axle Group Weights for Tandem Steer Tridem Drive Straight Trucks

Primary Weight	Secondary/Municipal
23 000 kg	21 000 kg
22 000 kg	20 000 kg
21 000 kg	
20 000 kg	

Table 3: Pony Trailer Wheelbase

Trailer	Wheelbase	Max. Axle Unit Weight
Trailer with single axle:	6.25 m - 7.50 m	7 200 Kg
	> 7.50 m	7 700 Kg
Trailer with a tandem axle group:	6.25 m - 7.50 m	11 000 Kg
	> 7.50 m	12 000 Kg
Trailer with a tridem axle group:	6.25 m - 7.50 m	15 000 Kg
	> 7.50 m	16 500 Kg

Table 4: Tridem Axle Group Weights for Trailers

Axle Spread	Primary Weight	Secondary/Municipal
> 3.6 m - 3.7 m (11'8" - 12'1")	24 000 kg	20 000 kg
> 3.0 m - 3.6 m (9'8" - 11'8")	23 000 kg	21 000 kg
2.4 m - 3.0 m (7'8" - 9'8")	21 000 kg	20 000 kg

Table 5: Combination Axle Weights (Inter-axle Spacing)
Maximum allowable weight for axle units may depend on the following minimum distance requirements between axles.

- For two single axles 3.0 metres (9'10")
- For a single axle and a tandem axle group, 3.0 metres (9'10")
- For a single axle and a tridem axle group 3.0 metres
- For two tandem axle groups, 5.0 metres (16'4")
- For a tandem axle group and a tridem axle group, 5.5 m
- For two tridem axle groups, 6.0 metres (19'6")
- For a multiple axle group and a single, tandem or tridem axle group 5.5 m (18'1")
- If inter-axle spacing is less than the minimum spacing, the combined axle weight is reduced by 500 kg for every 10 cm less than the above listed minimum distance requirement

A Guide to Saskatchewan Weight and Dimension Regulations

This pamphlet is published as a guide. If more details are required, please call the telephone numbers on the back of this guide.

Weight and Dimension Regulations

Under the authority of *The Highways and Transportation Act, 1997* maximum vehicle weight and dimension regulations are established for the following reasons:

1. Maximum gross vehicle weights are necessary for the protection of bridges.
2. Maximum weights on axles or axle groups are necessary for the protection of bridges and pavements.
3. Maximum tire weights are necessary for the protection of pavements and roadbeds.
4. Maximum dimensions are necessary for the protection of bridges, overpasses, etc. and to protect the other users of highways by allowing the safe travel of the general public.
5. Internal dimension limits are necessary to ensure that vehicles are designed to achieve desired levels of stability.

Weight Limits

For weight enforcement purposes only, all public highways are classified as follows:

Primary Highways:

The primary highways are shown on the map. Most of these are allowed primary weights year round.

Primary weights extend down the first 15 km along a secondary provincial highway or combination of secondary highways and provincial roads (Community Access Roads) from the intersection with a primary highway.

Secondary Highways:

This includes all provincial highways and provincial roads shown on the Official Road Map other than those designated as primary.

Municipal Highways:

This includes public highways other than provincial highways and provincial roads, but excludes public highways within urban limits. Generally, this includes all roads maintained by Saskatchewan's rural municipalities including the 600 and 700 series roads which are shown on the Official Road Map.

Year-Round Weight Restricted Highways:

Certain highways have maximum gross weights regardless of their classification, the vehicle configuration or the time of year. Weight restricted secondary highways are limited to 41 500 kg, unless otherwise noted.

For tandem & tandem End Dump Trailers the following combined axle group weights apply:

- Manufactured before January 1, 1989
 - <5 m - 3.4 m 32 000 kg
 - <3.4 m - 3 m 30 000 kg
- Manufactured on or after January 1, 1989
 - <5 m - 4.5 m 32 000 kg
 - <4.5 m - 3 m 30 000 kg

Note:

For weight limits on municipal roads, contact the local urban or rural municipality office.

Winter Weight Season Exceptions

Winter weights do not apply on provincial highways and roads listed under "Winter Weights Not Allowed" on the map legend.

Exemptions:

Weight regulations do not apply to:

1. A public highway, other than a provincial highway, within an Urban Municipality, that has a population of 1 000 or more.
2. Farm equipment being operated or towed for a purpose directly related to farming.

Dimension regulations apply only on provincial highways and provincial roads.

Local bylaws may govern vehicle weights and dimensions in urban municipalities with a population of more than 1 000.

Municipal Weight Limits

Weight limits on municipal highways are the same as those for secondary highways, including the winter season; except 8 axle B trains and unless otherwise allowed by the local municipality or regulation.

Winter Weight Season:

The period from November 16th in one year up to and including March 14th in the following year, unless the Winter Weight Season is restricted by a Minister's Order during this period.

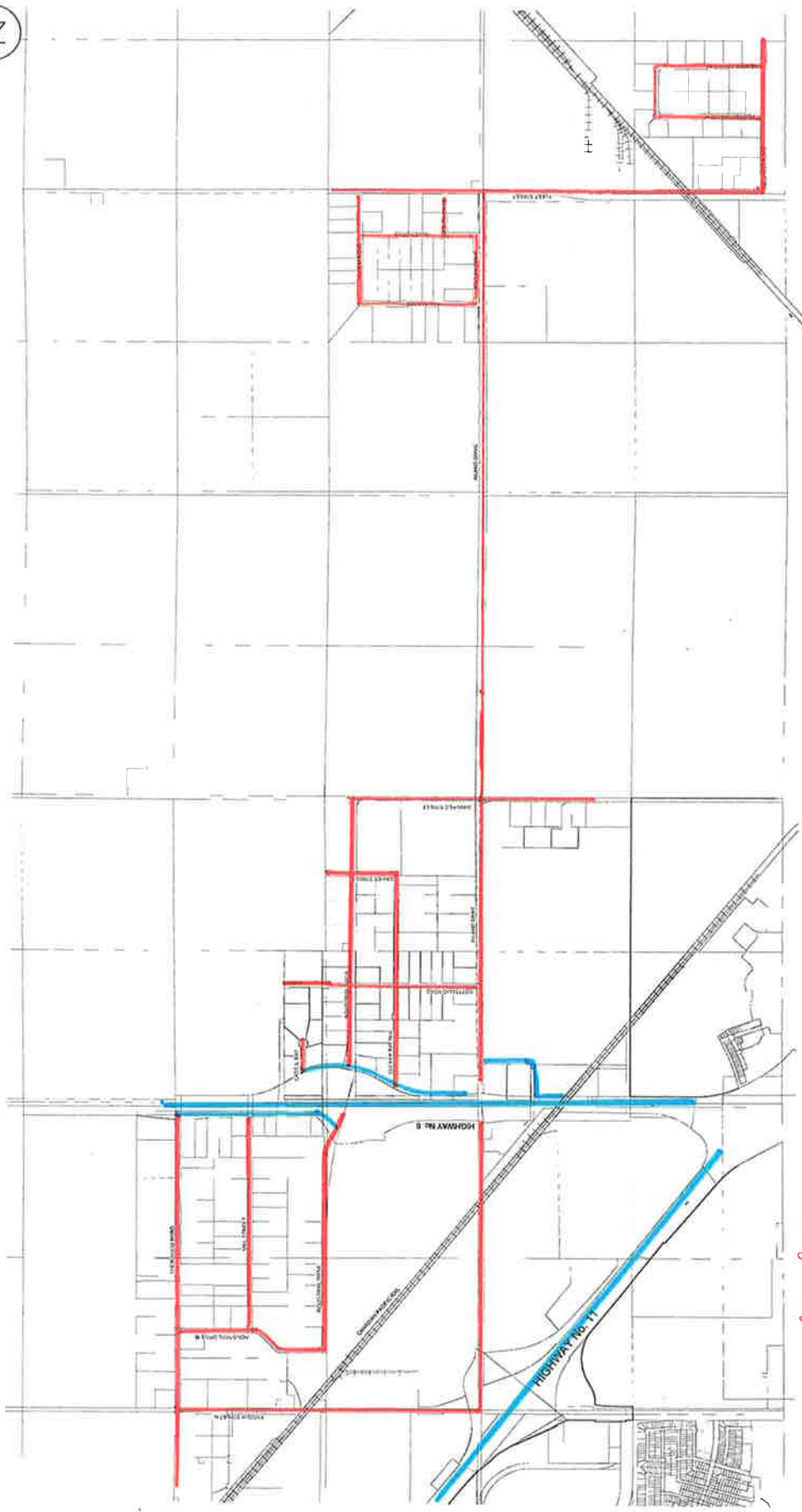
Registered Gross Vehicle Weights

Weights allowed on public highways are separate from the registered gross weight of a vehicle.

Vehicle registration relates specifically to *The Traffic Safety Act*. A heavy vehicle is usually registered to a specific weight determined by its business and the maximum weight it will generally carry. A registration fee is collected to reflect the relative damage to the highway system for operating at that registered weight. Despite gross weights allowed on a given highway, an operator cannot exceed the registered weight, which otherwise may result in a fine under *The Traffic Safety Act*.

Different classes of highways have different gross weight limits to reflect their design and the amount of pavement deterioration which can be accepted. Therefore, no vehicle may exceed weights specified for specific highways regardless of the registered weight of the vehicle. Exceeding any maximum allowable weight (or dimension) may result in a fine under *The Highways and Transportation Act, 1997* or it's regulations.

Primary Weight Streets and Roads Within Sherwood Industrial Park



RM of SHERWOOD
MINISTRY of HIGHWAYS



December 2019



Appendix C

R.M. of Sherwood No. 159 Vehicle Permit Fee Schedule

Permit prices set by the R.M. of Sherwood No. 159 shall not exceed the amount determined by the minister, Section 36.1(2) of *The Highways and Transportation Act, 1997*.

	Businesses Located and operating within RM of Sherwood	External Business Owner & Operator outside of the RM of Sherwood
Annual (Jan 1 st – Dec 31 st)	\$100.00 per unit	\$200.00 per unit
Annual Fleet Pricing (eligible for minimum fleet of 10)	\$1000.00	\$2000.00
Single Load (Valid for three (3) consecutive days)	\$50.00 per unit	\$50.00 per unit
Single Load during Spring Road Ban (Valid for three (3) consecutive days)	\$100.00 per unit	\$100.00 per unit

Businesses Located and Operating in the RM of Sherwood.

All businesses **located** and **operating** in the RM of Sherwood will be eligible for the rates identified above and may be required to accurately sign an eligibility declaration.

Exemptions

All haulers eligible for a “farm plate” through SGI will be required to obtain Vehicle Permits however will be exempt from the Vehicle Permit Fee. Haulers eligible for the exemption may be required to accurately sign an eligibility declaration.

Eligible Permits:

1) Primary Permit

This permit is for all vehicles hauling more than the allowed municipal and/or secondary weights up to primary weights as shown in *Saskatchewan Weight and Dimension Regulations, 2014*.

2) Overweight Permit

Consideration will be given for vehicles that are registered to haul more than Primary Weight on RM roads that meet all the regulations for hauling a designated weight, according to SGI and the Saskatchewan Trucker’s Guide 2019.

This will be a single load permit only and if any road damage is done due to the haul, the owner of the Company or permit holder will be responsible for the repair of the RM road.

3) Over Dimensional Permit:

Consideration will be given for vehicles that are over dimension to travel on or over RM roads. The RM will determine the route within the RM for all over dimensional loads.