

**PILOT BUTTE**

# Diverging Diamond Interchange

Pilot Butte ↗

N ↑

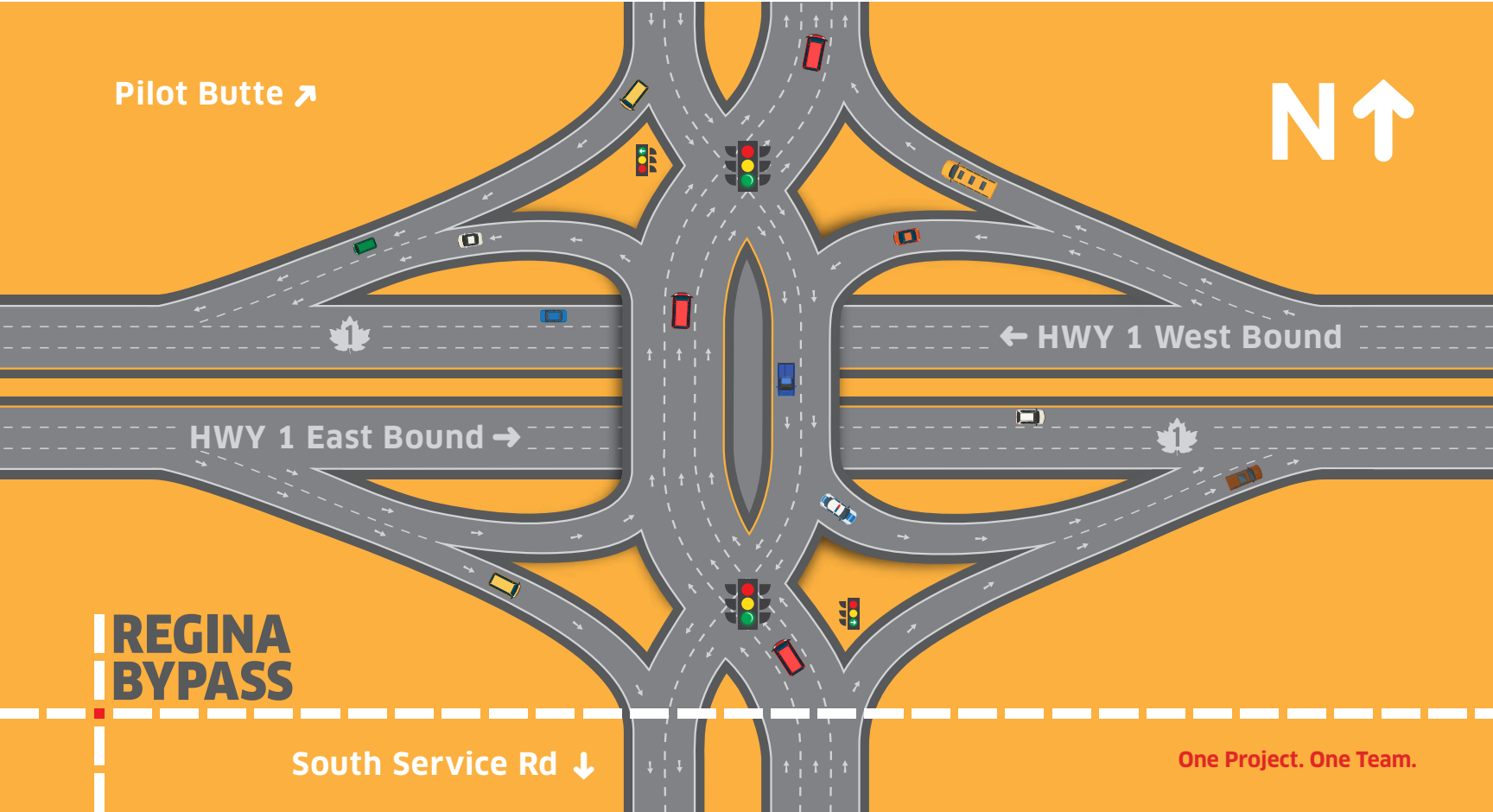
HWY 1 East Bound →

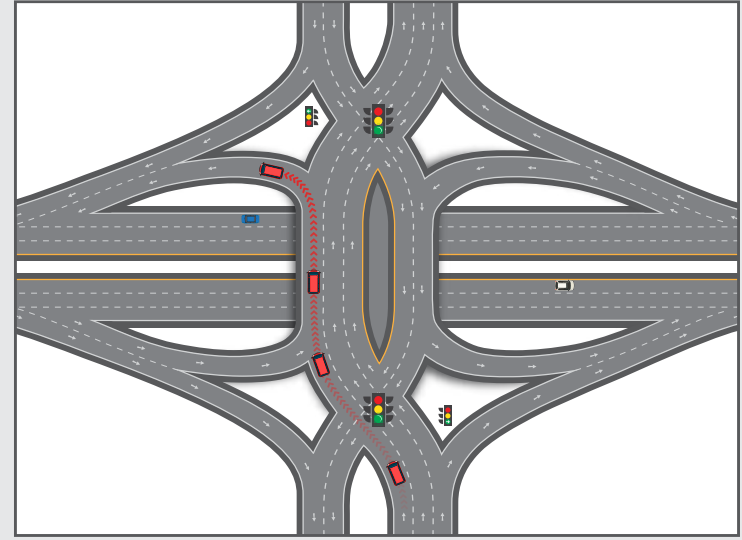
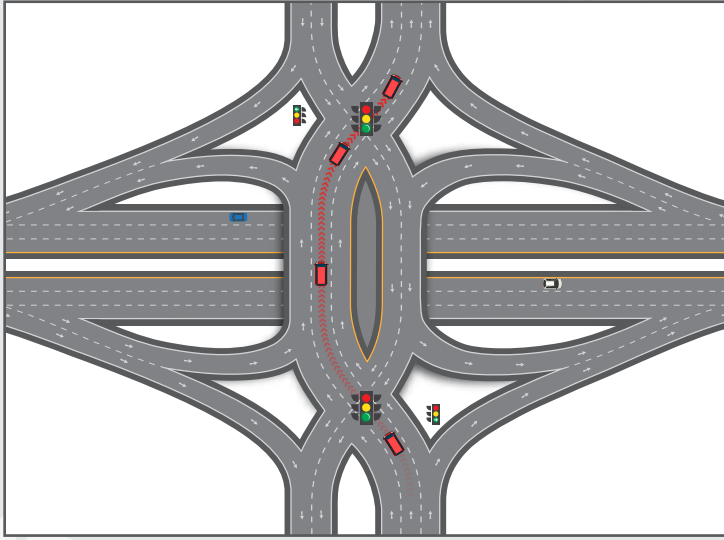
← HWY 1 West Bound

**REGINA  
BYPASS**

South Service Rd ↓

One Project. One Team.



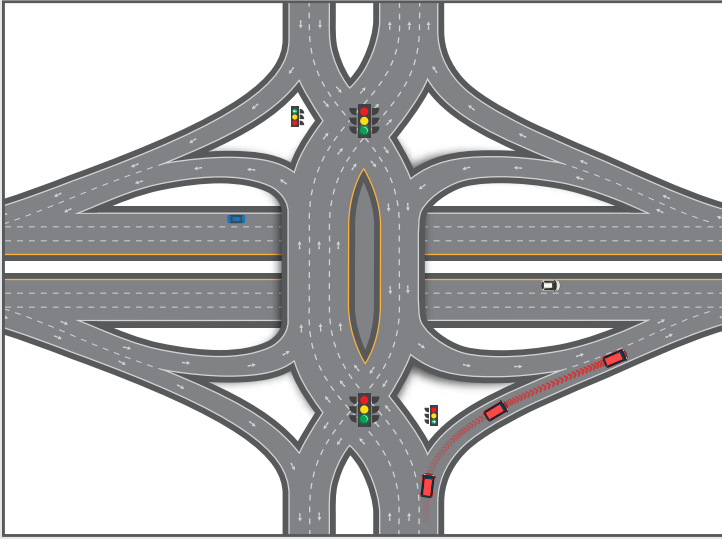


## TRAFFIC GOING STRAIGHT

- Watch for lane designation signs to proceed straight
- After the traffic lights, you will be crossing onto the opposite side of the road for a short distance before crossing back at the next traffic lights

## TRAFFIC TURNING LEFT

- Watch for lane designation signs for left turns
- After the traffic lights, you will be crossing onto the opposite side of the road for a short distance before making your left turn



## DRIVER INFORMATION

- Will reduce delays and improve safety
- Lane designation signs will guide you into the correct lanes for driving
- Reduce speed and be prepared to stop for traffic signals
- Crossover to opposite side, no need to stop or yield if making left hand turn

## TRAFFIC TURNING RIGHT

- Watch for lane designation signs for right turns



For more information about the Diverging Diamond Interchange, [visit reginabypass.ca](https://www.reginabypass.ca).  
24 Hour Contact Centre **1-844-679-4828**

## KEY DESIGN ELEMENTS

- A Diverging Diamond Interchange can reduce delays and improve safety by eliminating conflicting movements and maintaining the free flow of traffic
- The traffic lights shift traffic to opposite sides of the road to maintain traffic flow and assist with left turns
- Designed to accommodate forecast 2040 traffic volumes
- Well suited to handle a compact footprint where there is a large amount of traffic

**REGINA  
BYPASS**

**One Project. One Team.**